

# Chandler Preparatory Academy

2021-2022 Academic Year | [chandlerprepacademy.greatheartsacademies.org](http://chandlerprepacademy.greatheartsacademies.org)

1951 N. Alma School Rd  
Chandler, AZ 85224  
P: 480-855-5410

Mr. John-Paul Poppleton  
Headmaster  
P: 480-855-5410  
E: [jpoppleton@chandlerprep.org](mailto:jpoppleton@chandlerprep.org)

Mrs. Susan Ruby  
College Counselor  
P: 480-290-7459  
E: [sruby@chandlerprep.org](mailto:sruby@chandlerprep.org)

Mr. John Curley  
College Counselor  
P: 480-290-7458  
E: [jcurley@chandlerprep.org](mailto:jcurley@chandlerprep.org)

## School Information

School Code - 030649  
Established Date - 2005  
Size (9-12th grade enrollment) - 327 students  
Accreditation -  
Cognia  
American Academy of Liberal Education (AALE)

## Our Prep Schools



## GreatHearts

Great Hearts Academies is a non-profit network of charter schools and the largest "brick and mortar" provider of classical liberal arts education in the nation.

As a public charter, we provide a tuition-free education for approximately 27,500 students in 38 academies in Arizona and Texas. Great Hearts is subject to open enrollment laws. Typically, our academies receive more applications for enrollment than there are seats available. If this is the case for any grade level at an academy, a lottery will be held. Students who are not admitted through the lottery process will be placed on a waitlist and may be offered admission during that year if a seat becomes available.

Our core curriculum is a robust liberal arts education that introduces students to the tools of critical inquiry essential to each discipline and every walk of life. The Great Books curriculum emphasizes the fundamentals of the arts, sciences, and humanities as students are in conversation with many of the most challenging, influential texts in the Western canon. This academic approach prepares college-bound students for the rigors of higher education as well as agreeing with Plato, that the highest goal of education is to become good, intellectually and morally.

## Network Averages:

Testing and data results from the Class of 2021 - 688 across AZ and TX

	Middle 50%	Mean		Middle 50%	Mean
ACT English	24 - 34	28.3	SAT EBRW	580 - 680	628
ACT Math	24 - 29	26.5	SAT Math	560 - 690	622
ACT Reading	24 - 29	27.8	SAT Composite	1150 - 1360	1250
ACT Science	23 - 30	26.0	# of students tested:	418	
ACT Composite	25 - 30	27.3			
# of students tested:	89				

Percentage of students immediately attending a college/university	93.60 %
Percentage of students pursuing STEM degrees	56.25 %
Percentage of students who were offered merit-based scholarships (including athletic scholarships)	67.15 %
National Merit Finalists	23
National Merit Commended (including National Hispanic)	41
Number of students attending an honors college/program	148
Number of students enlisting or attending a service academy	15

## Great Hearts Student Academic Record (Transcript) Updates:

2nd Semester Grading Policy for Prep Schools (6-12th grade) for Spring 2020

– Students' Quarter 4 remote learning coursework was graded on a simple "Pass/Fail" basis; Semester 2 courses were letter graded.

– Students who earned a "Pass" in Q4 received a letter grade for Semester 2 that is no lower than the letter grade earned for the same course in Quarter 3; distinguished coursework in Q4 may have resulted in a Semester 2 letter grade that is higher than the Q3 grade.

– Any courses taken only in Quarter 4 were graded according to an A-F letter grade scale.

– If a student earned a "Fail" for Q4 coursework, the letter grade for that course may be lower than the Quarter 3 grade, including the possibility of an "F" for the semester and no credits earned.

# High School Curriculum- Chandler Preparatory Academy

## Great Hearts Curriculum Refinement

In the spirit of continuous improvement, rising seniors will continue to study Humane Letters and Fine Arts; however, students will have the opportunity to select three courses out of the remaining five honors level offerings: Honors Physics II, Honors Calculus II, a fourth year of Honors Foreign Language and two new courses:

Honors Rhetoric: an in-depth study of American speeches, debates and persuasive writing presented through the lens of classical rhetorical principles.

Honors Logic and Computation: a formal study of logic from Aristotle through its modern incarnation as computer coding

### 9<sup>th</sup> Grade Curriculum:

- Honors Humane Letters I: American Tradition
- Honors Geometry
- Honors Biology (with lab)
- Music Theory III / Choir
- Honors Modern Language I (French I, German I or Spanish I) or Honors Latin IV
- Poetry I

### 10<sup>th</sup> Grade Curriculum:

- Honors Humane Letters II: Modern Europe
- Honors Algebra II/Trigonometry
- Honors Chemistry (with lab)
- Music Theory IV / Choir
- Honors Modern Language II (French II, German II or Spanish II) or Honors Latin V
- Poetry II

### 11<sup>th</sup> Grade Curriculum:

- Honors Humane Letters III: Antiquity
- Honors Physics I: Electromagnetism/ Thermodynamics/ Mechanics (with lab)

- Honors Calculus I
- Honors Modern Language III (French III, German III or Spanish III) or Honors Ancient Greek I
- Honors Economics
- Drama I

### 12<sup>th</sup> Grade Curriculum:

- Honors Humane Letters IV: Faith, Reason and Modernity
- Honors Calculus II \*
- Honors Physics II \*
- Honors Modern Language IV \* (French IV, German IV or Spanish IV) or Honors Ancient Greek II

- Honors Rhetoric \*
- Honors Logic and Computation\*
- Drama II
- Studio Art III
- Senior Thesis & Defense

\*Student must take Honors Humane Letters and then choose three out of the five remaining Honors options.

### Senior Thesis and Defense:

Each graduate completes a capstone project known as the Senior Thesis. The Senior Thesis is the culmination of the student's years at the academy. It is a year-long project completed in addition to the normal course load. In this project, students work closely with an advisor from the faculty to read and discuss two to three significant Great Books in one-on-one meetings during the first and second quarter. By the end of the third quarter, the student will have produced a 15-20 page thesis that synthetically brings forth their own answer to a major philosophical question. Finally, during the fourth quarter, each student will participate in an hour-long oral defense of their work before a panel of teachers and a substantial audience. Students receive .25 credit for successfully completing their thesis and defense.

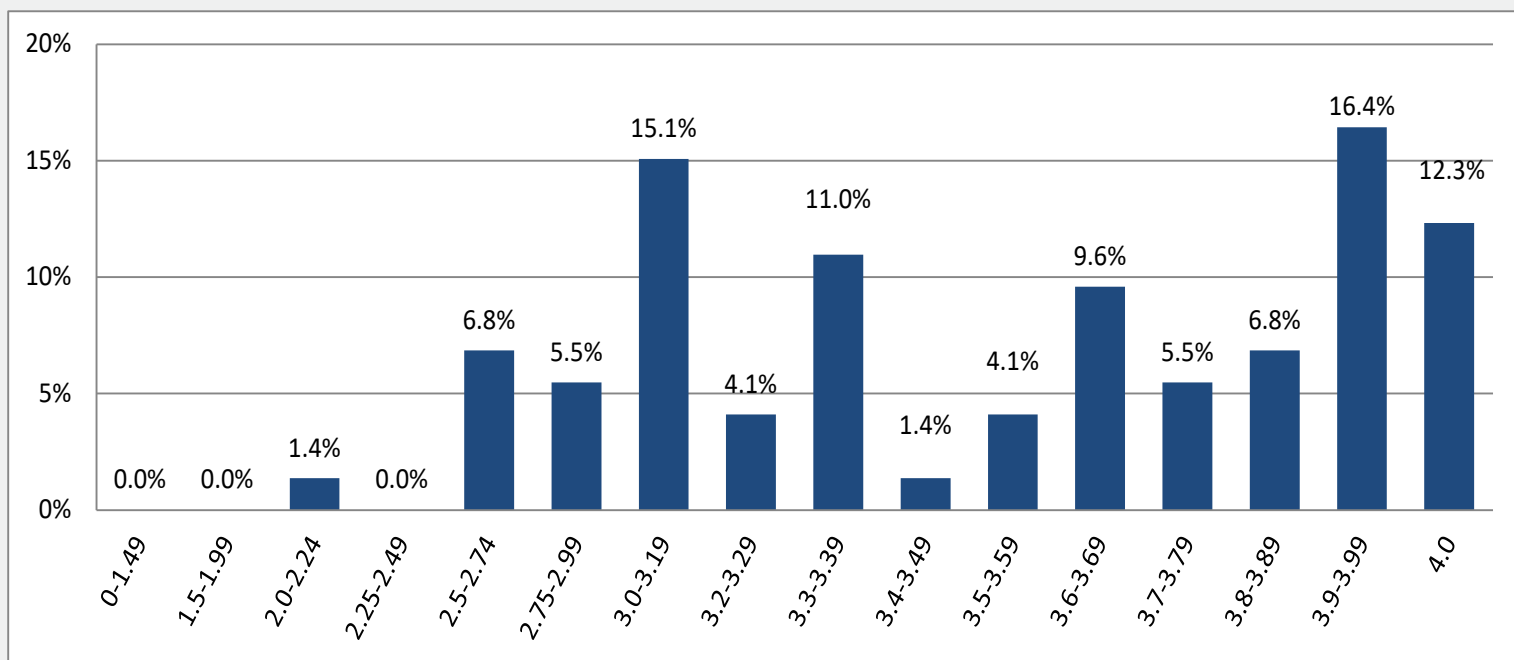
### Humane Letters

Perhaps the most distinctive feature of the high school curriculum at Great Hearts is Humane Letters. In the 9th through 12th grades, English and History are combined in the Humane Letters courses: these are 2-hour long, daily seminars, directed Socratically and revolving around readings from Western Civilization's best works in philosophy, drama, history, autobiography, poetry, novels and essays. This collaborative setting allows for the development of the art of conversation, which includes above all the habit of listening well to both the great authors as well as their peers. The class is an exploration of the permanent questions that animate any truly human life through the history and literature of the Great Tradition of the West. What is a good man and good citizen, what are the qualities of a true friend, what kinds of virtue are necessary for a flourishing political and moral life are just a few of the important questions that are addressed with uncommon subtlety and profundity in the books that we read together.

- Due to our deliberate Great Books curriculum and dedication to Socratic seminar, no AP classes or electives are offered.

-- Core Course Studies may be reflected on a student's transcript. The Core Course Studies class provides students with instruction and support to enable them to progress academically in core content areas. This instruction supplements but does not supplant any core-area course in which students are also enrolled.

# Class of 2022 GPA Distribution - Chandler Prep



\*Class of 2022 has 73 students

## Chandler Prep Class of 2021 Facts

Number of graduates	73
Unweighted GPA Range	2.03 - 4.0
Average Unweighted GPA	3.484
% of graduates attending a 4-year college/university	79%
% of graduates attending a 2-year college	19%
% of graduates attending an Honors college/program	24.6%
% of graduates entering STEM majors	74%
# of National Merit Finalists	3
# of National Merit Commended	5
# of National Hispanic Scholars	1

TEST	Middle 50%	Mean	# Tested
ACT	24 - 30	27.4	20
SAT CR & M	1190-1395	1281	64

## Select Features

Beginning Fall 2019, all student transcripts will include level 8 Algebra with P/F (pass/fail) grade to indicate a student's complete level of mathematical progression.

The Arizona state requirement, one full credit, for U.S. History is fulfilled in 9th grade Humane Letters.

The Arizona state requirement, one-half credit, for U.S. Government is fulfilled in 10th grade Humane Letters.

The highest course level in all subjects, with the exception of poetry, performing and fine arts, is Honors.

For the weighted GPA, all Honors courses receive a full extra point for GPA calculation.

We believe in the growth of leaders through accomplishments; we do not have class officers or NHS.

We do not rank our students, and letter grades and competition among students are de-emphasized.

Transfer students may have a different curricular sequence.

The GPA presented on transcripts only includes classes taken at a Great Hearts Academy.

Chandler Prep has a community service graduation requirement of 40 hours.

# Network Sample College Acceptances and Matriculation for Classes of 2019-2021

Amherst College	Franciscan University of Steubenville	Princeton University	United States Military Academy
Angelo State University	Full Sail University	Purdue University-Main Campus	United States Naval Academy
Arizona State University - Barrett, The Honors College	George Washington University	Ranger College	University of California-Berkeley
Arizona State University	Gonzaga University	Reed College	University of California-Irvine
Ave Maria University	Grand Canyon University-Traditional Campus	Rensselaer Polytechnic Institute	University of California-Los Angeles
Azusa Pacific University	Grinnell College	Rhodes College	University of California-San Diego
Barnard College	Hamilton College	Rice University	University of California-Santa Cruz
Baylor University	Harding University	Rio Salado College	University of Chicago
Bellarmino University	Harvard University	Rose-Hulman Institute of Technology	University of Colorado Boulder
Belmont University	High Point University	Saint Edward's University	University of Colorado Colorado Springs
Benedictine College	Hillsdale College	Saint Louis University	University of Dallas
Benedictine University at Mesa	Hope College	Saint Mary's University of Minnesota	University of Hawaii at Manoa
Bentley University	Indiana University-Bloomington	Saint Paul College	University of Iowa
Biola University	Iowa State University	Sam Houston State University	University of Maryland
Blinn College	John Paul the Great Catholic University	San Antonio College	University of Michigan-Ann Arbor
Bob Jones University	Johnson & Wales University-Providence	San Diego State University	University of Notre Dame
Boise State University	Judson University	Santa Clara University	University of Oklahoma
Bowdoin College	Laguna College of Art and Design	Savannah College of Art & Design - SCAD	University of Oregon
Brigham Young University	Lehigh University	Schreiner University	University of Pennsylvania
Buena Vista University	LeTourneau University	Scripps College	University of Pittsburgh
California Lutheran University	Loyola University Chicago	Seattle University	University of Portland
California Polytechnic State University	Macalester College	Seton Hall University	University of San Diego
Calvin University	Maryville College	South Mountain Community College	University of San Francisco
Central Arizona College	Massachusetts Institute of Technology	Southern Nazarene University	University of Southern California
Central College	McGill University	Southern Utah University	University of Tulsa
Chaminade University of Honolulu	Michigan State University	Southern Virginia University	University of Utah
Chapman University	Milwaukee School of Engineering	St Catherine University	University of Washington
Claremont McKenna College	Montana Technological University	St. John's College	University of Wisconsin-Madison
Clemson University	Mount St. Mary's University	St. John's College	University of Wyoming
College of Saint Benedict	New Mexico State University-Main Campus	St. Mary's University	Utah State University
Colorado College	New York University	Susquehanna University	Vanderbilt University
Colorado State University-Fort Collins	North Dakota State University	Swarthmore College	Villanova University
Conservatory of Recording Arts and Sciences	North Lake College	Tabor College	Walsh University
Creighton University	Northern Arizona University	Texas A & M University	Washington and Lee University
Culinary Institute of America	Northwest Vista College	Texas Christian University	Washington State University
Dallas Baptist University	Northwestern University	Texas Tech University	Weber State University
Dartmouth College	Occidental College	Texas Woman's University	Wesleyan University
Dixie State University	Oklahoma State University-Main Campus	The Master's University and Seminary	West Virginia University
Drake University	Oregon State University	The University of Alabama	Western Governors University
Duke University	Pacific Lutheran University	The University of Arizona	Westmont College
East Tennessee State University	Pennsylvania State University-Main Campus	The University of Texas (all campuses)	Wheaton College
Eastfield College	Pensacola Christian College	Thomas Aquinas College	Whitworth University
Embry-Riddle Aeronautical University-PreScott	Pepperdine University	Trinity College Dublin	Willamette University
Emory University	Phoenix College	Trinity University	Wittenberg University
Fordham University	Point Loma Nazarene University	Tufts University	Woodbury University

## Extra-curricular Activities: Creation and facilitation updates for 2021-2022

The Academy believes that students are happier and more successful at the Academy if they are involved in one or more extra-curricular activities. The extracurricular offerings are all run by the Academy and NOT required of students. The Academy does not permit student-led extracurricular groups, as the Academy believes the host of options crafted and executed by the school allow for the best opportunity for student involvement and success. To be eligible for extracurricular activities at the Academy, the student must maintain passing grades in all subjects and must have displayed good behavior.

1. Athletics: under the supervision of the Athletic Director, students can compete in a range of Athletic opportunities.
2. Volunteer Opportunities: In running the operations of the Academy, there are a host of circumstances in which student volunteers are invited to assist the school in organizing and executing special events, providing peer support, leading mentor programs, and/or editing school publications.
3. Enrichment Courses: A typical school-day provides six rich hours of learning for students. The Academy knows that many students will crave additional opportunity to study some topics more deeply while others may wish to explore previously unstudied subject matter. The Enrichment Courses are additional opportunities for student to receive instruction from the Academy's faculty outside of the ordinary time of the school day. While the content of each course may change from semester to semester, the menu of enrichment courses that a school offers are from a fixed list that our network can best support, supervise, and continually improve. All enrichment courses have attendance requirements and culminate with a final project/deliverable at the end of the semester. The following are some enrichment courses the Academy may offer:

o World Languages	o Speech and Debate	o Instrumental Music	o Engineering/Robotics	o Poetry	o Strategic Games
o Science	o Theater	o Writer's Workshop	o Philosophy	o Chess	
o Antiquities	o Mock Trial	o Choir	o Horticulture	o Math	

FOR ADDITIONAL INFORMATION ABOUT THE GREAT HEARTS ACADEMIES, PLEASE CONTACT:  
[collegecounseling@greatheartsaz.org](mailto:collegecounseling@greatheartsaz.org)